



461 Railroad Ave, Unit C  
PO Box 1477  
Gypsum, Colorado 81637

970-827-5406  
info@erwc.org  
www.erwc.org  
Tax ID#: 20-4448864



## Advocates for our rivers

### Request for Proposal

Eagle River Watershed Council (ERWC) is requesting proposals from qualified consultants for environmental and engineering planning and permitting (NEPA) services for the Wearyman Watershed Health Improvement Project on the Eagle-Holy Cross Ranger District, White River National Forest (WRNF).

Proposals must be submitted in digital format via email to Anna Nakae at [nakae@erwc.org](mailto:nakae@erwc.org) on or before 5:00 PM MDT, Friday, July 28, 2023.

If you have any questions or would like further clarification of any aspect of this request for bid, please contact Anna Nakae at [nakae@erwc.org](mailto:nakae@erwc.org) by 5:00 PM MDT, Friday, July 14. Responses to all questions submitted by consultants will be distributed by email to all parties and posted on the [ERWC website](#) by Friday, July 21.

Schedule	Deadline
Issue Request for Proposal	June 28, 2023
Questions/clarifications about RFP due	5:00 PM MDT, July 14, 2023
Responses to questions emailed to all parties and posted on <a href="#">ERWC's website</a>	5:00 PM MDT, July 21, 2023
Proposals Due	5:00 PM MDT, July 28, 2023
Select Consultant	July 31 - Aug 4, 2023
Finalize Contract/Issue Notice of Award	Aug 7 - Aug 10, 2023

### Wearyman Watershed Health Improvement Project Background

Annually during spring runoff, Wearyman Creek exhibits at or above bankfull discharge levels, where the road, Forest Service Road (FSR) 708.1, captures large portions of the stream. Over the years, this has created extensive erosion and downcutting to the road and in-stream sedimentation both into Wearyman Creek and Turkey Creek. The latter, Turkey Creek, is the municipal water supply for the Town of Red Cliff. In 2019, the road was temporarily closed due to a hillslope failure that blocked the road. Drainage and road maintenance work was completed in 2022 which allowed the road to reopen and to temporarily mitigate erosion and sedimentation issues. However, a more sustainable long-term solution is still needed. A project site map is included in Appendix A, and site photos are included in Appendix C.

To improve watershed health, promote ecosystem resiliency, provide for sustainable future access, and reduce the instream sedimentation negatively impacting both stream habitat and the municipal water supply, a watershed improvement project is proposed. This project will address the continuing negative interactions between Wearyman Creek and the lower section of FSR 708.1 – McAllister Gulch, by either relocating the connection between Shrine Pass Road and Camp Hale, while decommissioning the associated section of road/trail and restoring Wearyman Creek to a pre-anthropogenic state, or by designing and constructing the co-location of the road/trail with Wearyman Creek in such a way that reduces or eliminates the negative interactions between the two. Five possible alternatives, including the existing FSR 708.1 and an administrative access road, have been identified as options through initial observations (Appendix A & B). However, additional or different alternatives may be identified during the engineering feasibility study.

FSR 708.1 is a very popular Off Highway Vehicle (OHV) route that connects to the larger OHV trail network in the Camp Hale-Shrine Pass/Vail Pass recreation area. Because of the recreational significance, stakeholder/community engagement will be a key part of this project.

The WRNF was awarded a Legacy Roads and Trails grant through the Bipartisan Infrastructure Law to complete this project. ERWC will be managing this project with oversight and collaboration from the WRNF.

ERWC, WRNF, and Colorado Off Road Enterprises (CORE) were also awarded a Colorado Parks and Wildlife (CPW) Off Highway Vehicle grant for a robust stakeholder engagement process, starting in 2024. The Camp Hale-Vail Pass Stakeholder Engagement is a part of the larger Wearyman Watershed Health Improvement project but will be facilitated by a consultant, separate from this proposal.

### **Background of the Watershed Council**

Eagle River Watershed Council has the mission to advocate for the health of the Upper Colorado and Eagle River watersheds through research, projects, and education. The Watershed Council strives to protect and enhance the high-quality natural, scenic, and economic values that our rivers and tributaries provide to the citizens, visitors, and wildlife of the Eagle River and Colorado River watersheds located in Eagle County.

Our organization has been working to achieve our mission since 2004, and has direct ties to the Eagle River Environmental Business Alliance which sought to improve water quality and river experiences following the Eagle Mine Spill in the late 1980s. Since then, we have achieved measurable progress in water quality throughout the watershed and growing as an organization to better serve our community.

### **Scope of Services & Deliverables**

Task #1: Initiation of Camp Hale-Vail Pass Stakeholder Engagement Group

*Completed by: Dec. 2023*

- Work with WRNF staff to identify, collect contact information, and complete initial outreach to local interested parties and stakeholders, including user groups, environmental advocacy groups, Eagle County, and agencies with jurisdictional authority, to lay the foundation for the Camp Hale-Vail Pass Stakeholder Engagement group. Initiation of this group should be done by December 2023 by the Consultant. In 2024, the facilitation of this group will be handed off to a different consultant, hired with funds from the CPW OHV grant. The Consultant (selected through this RFP) will collaborate with the stakeholder facilitator consultant to ensure the stakeholder group is engaged at key milestones during the NEPA process.

Task #2: Complete initial transportation engineering feasibility study of alternative routes and co-located stream-road alternative

*Completed by: March 2024*

- Complete engineering feasibility study and environmental geospatial analysis (a “desktop review”) in the Wearyman sub-watershed and surrounding area, see map in Appendix A for more details, of current co-located stream-road alternative, existing administrative access road alternative and possible new road alignment alternatives. Exploration of new road alignments should be focused in the area southwest of the current FS 708.1 alignment, see Appendix B for more detail.
- Complete a geotechnical analysis to identify 1 to 2 possible new alternative recreation road alignments, depending on feasibility, focused in the area in Appendix B.
- Create concept designs for three or four route alignments; 1 to 2 new alignments, existing administrative access route, and current co-located stream-road alternative.
- In addition to the concept designs, provide cost estimates of each route option, including construction, operations, and maintenance.

Task #3: Provide Environmental Planning services to develop “NEPA ready” proposed action(s)

*Completed by: Sept. 2024*

- Work with WRNF staff to create Purpose & Need document
- Using the concept designs created in Task 2, work with WRNF staff to identify and conduct appropriate data and resource-level field surveys to develop the plan and allow the project to be “NEPA ready”. Will include cultural and wildlife, may include botany, streams/wetlands, etc.
- Provide cultural resources support to ensure State Historic Preservation Office (SHPO) compliance.

Task #4: Provide 3rd party National Environmental Policy Act (NEPA) environmental analysis, support, compliance, and permitting

*Completed by: Dec. 2025*

*At this time, we are unsure if this project will require an Environmental Assessment (EA) or an Environmental Impact Statement (EIS). We would like to complete NEPA by the end of Dec. 2025, but we understand this timeline will be mainly dictated by the level of NEPA required.*

- Prepare appropriate NEPA documentation, both written and mapping materials, including, but not limited to, scoping EA or EIS, response to comments, and decision documentation.
- Complete any additional fieldwork not completed during the development of the proposed action.
- Coordinate and collaborate with WRNF resource specialty staff on the NEPA process.
- Collaborate with the stakeholder facilitator consultant to ensure the Camp Hale-Vail Pass Stakeholder group is engaged at key milestones during the NEPA process.

Task #5: Provide additional permitting and planning support, as needed

- Prepare necessary reports, data reviews, and other documents for U.S. Army Corps of Engineers 404 permits to work within the stream, if necessary, based on the alternative chosen through either the Finding of No Significant Impact (FONSI) or Record of Decision (ROD)
- Provide support to WRNF staff to update the WRNF Forest Travel Management Plan to reflect the outcome of this process

**Contents of Proposals:**

Responses to the RFP should include a description of the following:

1. **Understanding the Work.** Demonstrate an understanding of the work and present an overall summary of what the Consultant determines is necessary to accomplish the goals of the project
2. **Project Approach.** Description of how the firm plans to complete these services (i.e. the approach), including any recommended changes or additions to the Scope of Services above. Provide any proposed strategies based on additional insight, capabilities, or perspectives of the Consultant. Clearly describe how the proposed Project Approach meets the goals of the project.
3. **Project Team.** Propose a project team including Consultant staff and subconsultant(s). Include resumes for individuals from all associated consultant(s) and any additional subconsultants. The resumes should emphasize recent experience of the project team and should include the following information:
  - a. Geographic location of the office to which the individual is normally assigned
  - b. Proposed responsibility and function on the team
  - c. Estimated percent of time and duration assigned to this project
  - d. Background, relevant experience, and education
4. **Anticipated Schedule.** The work is anticipated to start by August 2023 and is envisioned to be completed by December 2025. However, the NEPA permitting process will inform the timeline. Though we have provided a preferred schedule for task completion outlined above, we will consider adjusting this timeline, per the recommendation of the WRNF and the Consultant. To this end, we request that the Consultant submit a project schedule for consideration illustrating when each task will be accomplished.
5. **Estimated Costs.** Although the selection of a consultant will not be wholly based on cost, an estimate of costs for each task in the Consultant's Scope of Work must be

included. For task 4, please include a base price and then a price option for an EA and a price option for an EIS, as at this time we are unsure which level of NEPA will be required. This cost estimate, at minimum, shows the hourly rate of all team members, the estimated hours by task for each member, subconsultants costs by task, and other direct costs including proposed markups.

6. **Consultant Qualifications.** This section of the proposal should summarize the recent experience of the Consultant in performing related work. A maximum of five projects, completed within the last five years, may be included. For each related project, please include the following information:
  - a. Name of client
  - b. Name and current contact information of primary client contact.
  - c. Date pertinent work was completed.
  - d. Specific role of the firm on this project.
  - e. Initial Consultant contract amount and initial completion date.
  - f. Final Consultant contract amount and final completion date.
  - g. Involvement of staff proposed for Eagle River Watershed Council's project.

Information on projects completed by the firm that did not actively involve members of the proposed project team should be minimized. The above clients will be considered references by Eagle River Watershed Council that may be checked for finalists of this project.

7. **Project Management Plan.** The Consultant shall provide a brief project management plan for the work. The plan shall demonstrate the following:
  - a. Scope, progress measurement, and reporting
  - b. Schedule measurement and reporting
  - c. Staff and subconsultant team management

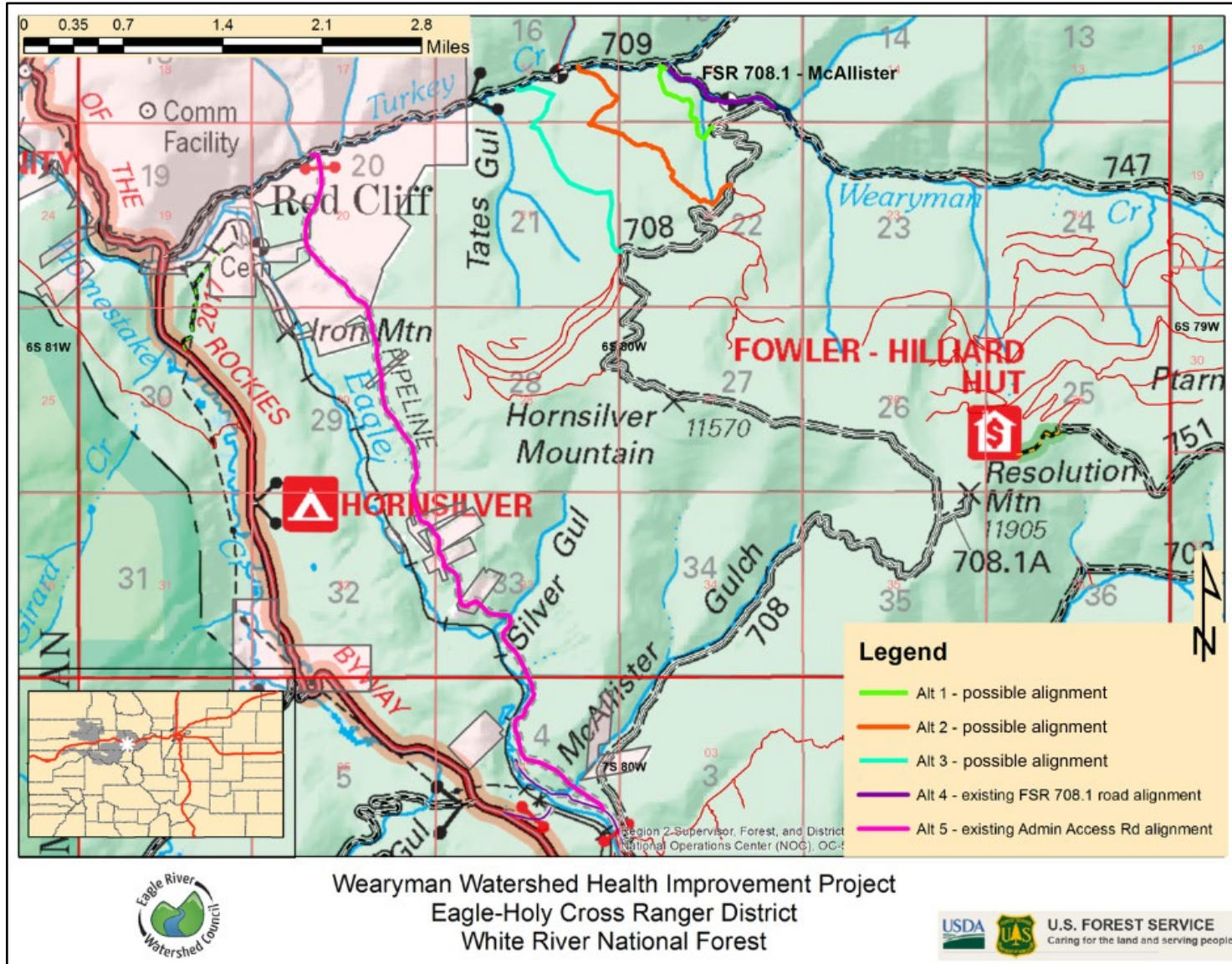
Submissions must be in one, single electronic file (PDF) and is not to exceed 15 pages. Individual resumes are limited to two pages and are not included in the 15 page limit.

### **Selection Procedure**

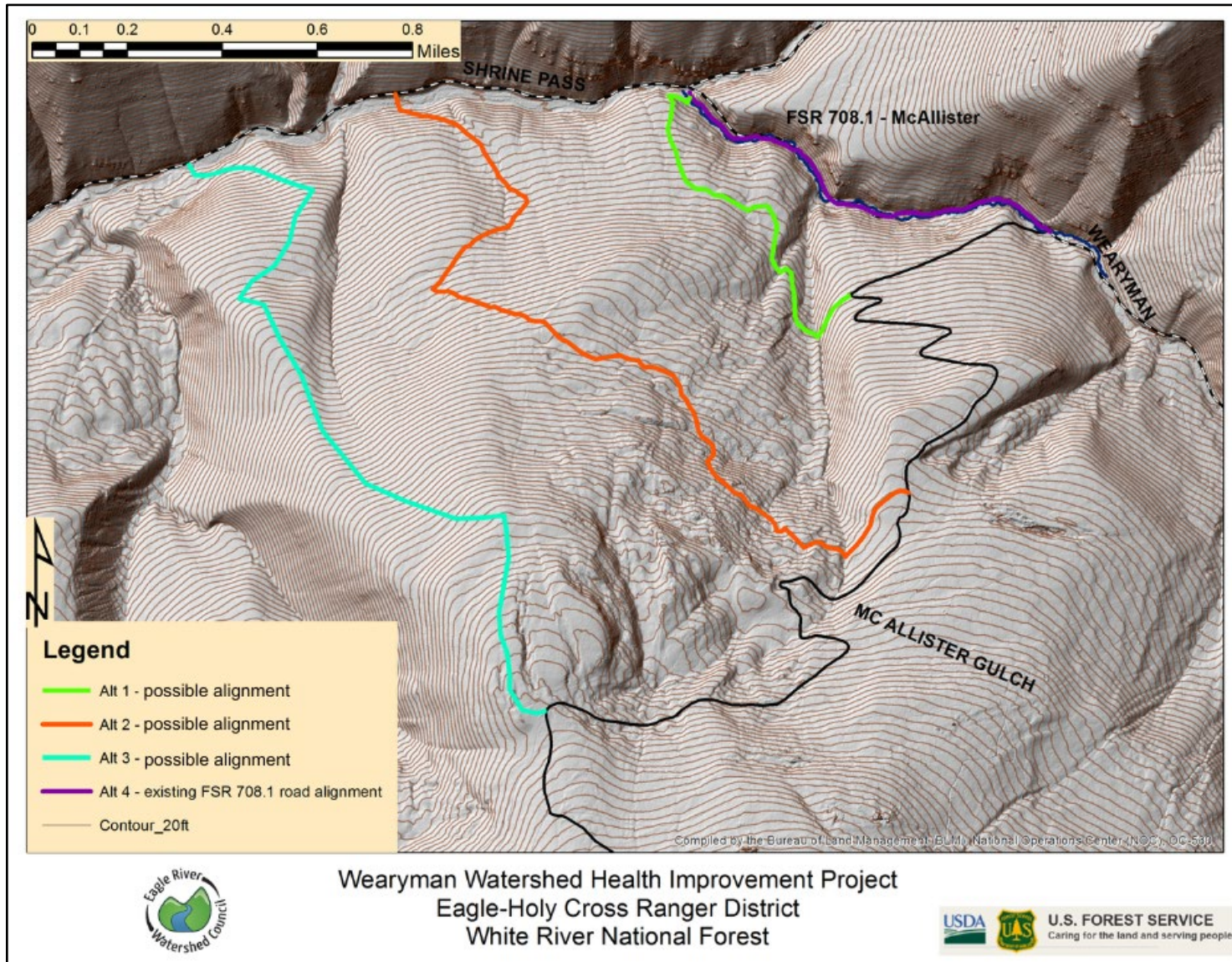
Proposals will be reviewed and evaluated by Eagle River Watershed Council staff and board. This will be a selection process designated to identify the "best fit" of Eagle River Watershed Council and the Consultant, taking into consideration a variety of criteria including, but not limited to, the following:

1. Qualifications and experience (1 - 25 points)
2. Project team (1 - 10 points)
3. Project approach (1 - 20 points)
4. Ability to meet project schedule (1 - 5 points)
5. Past project references (references may be contacted during the review process) (1 - 10 points)
6. Quality of proposal (1 - 10 points)
7. Consultant fee (1 - 10 points)

Appendix A - Project Site Map



## Appendix B - Possible Alternative Alignments Map



## Appendix C - Site Photos



Figure 1. Example of extensive downcutting, erosion, and Wearyman Creek running through the road prism on FSR 708.1 McAllister Gulch, locally known as Wearyman Road. The picture was taken prior to road maintenance completed in Aug. 2022.





Figure 2. Example of the co-location of Wearyman Creek and FS Road 708.1. Photo taken May 2023, after road maintenance was completed in Aug. 2022. Even with the armoring and raising of the road/stream bank, some water is still flowing into the road prism.



Figure 3. One of the six stream crossings along the 0.7 mile FS Road 708.1. Photo taken prior to road maintenance that was completed in Aug. 2022.



Figure 4. Same stream crossing as Figure 3, after road maintenance was completed in Aug. 2022. The road prism was raised on each side of the crossing to prevent water from running down the road.